

# Predicting DropOut Rates

Garrett Anderson Christian Harwick t Karla McGinty t Jeremy Sidoti

Advisor: Dr. Darci Kracht

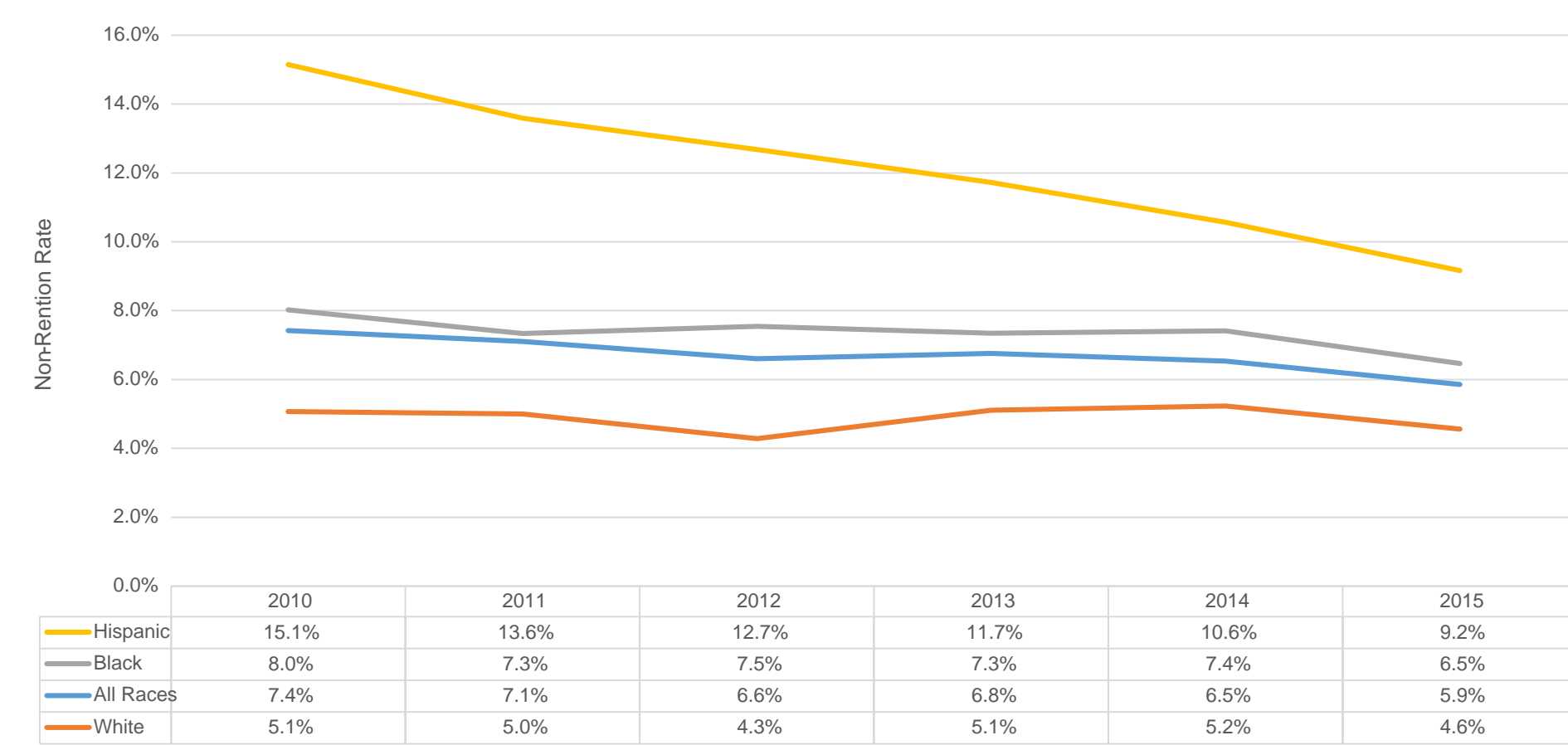


## Introduction

We researched the retention rate of Kent State incoming freshman from 2014-2016. We compared two distinct variables: gender and race. Retention rate is defined as whether the student stays at KSU the following semester no matter what reason.

We compared this data with national retention rates for the same variables. We also looked at national high school retention rates as well.

### High School Retention Rates



## Kent State Retention Rate

## National Collegiate Retention

## Comparisons

In most recent years, Black students at Kent State have the highest drop-out rate which corresponds to the national average. In previous years, Hispanic students had a higher drop-out rate than Black students which goes against the national trend. Kent State male students had a consistently higher drop-out rate when compared to female students. The national average shows this same result.

## Conclusion

High School drop-out rates have been decreasing over the years, especially for Hispanic students. Over the last 3 years Kent State drop-out rates have been inconsistent but this is partially due to our small sample size. National drop-out rates have dropped slightly. Hopefully, in the future drop-out rates continue to decline in all 3 of these areas.